

Application, Rating, & Electrical Data

Application	Biomedical freezer
Storage Volume (L/Cu.Ft)	308/10.88
Temperature Range	-10°C ~ -25°C
Default Set Point	-25°C
Power	115~V/60Hz 220-240~V/50Hz 220-240~V/60Hz
Current	3A 1.18A 1.3A
Power Cord Length	1.7m
Certification	CE/UL/FDA
Door type	Solid door
Application Environment	Non-corrosive, non-flammable, non-explosive
Ambient Operating Temperature	10°C-32°C

Refrigeration

Refrigeration System	Direct cooling
Compressor	Hermetic, fixed frequency
Condenser Type	Built in/Built in + micro channel condenser
Expansion Device	Capillary tube
Evaporator Type	Shelf evaporator
Defrost Method	Manual defrost
Refrigerant	R290

Controller / Configuration Settings

Display screen	LCD
Controller Type	Microprocessor
Security	Lockable door, protected settings
Control Sensor	NTC
Communication Ports	USB, Remote alarm contacts
Power Failure Alarm	Yes
High/Low Alarms	Yes, fully adjustable
Door Ajar Alarm	Yes
Download	Yes, via USB, PDF
Temperature Log	Yes, download via USB

Performance Characteristics (normal operating conditions)

Uniformity (°C)	≤3.5°C
Energy consumption (kWh/day)	1.2 1.2 1.2
Noise emission dB(A)	60 46 48
Pull-down time to -25°C (min)	90 150 90

Typical Temperature Map

Fre	test 1	test 2	test 3	test 4	test 5	test 6	test 7	test 8	test 9
Avg	-24.59	-24.89	-25.51	-26.29	-26.62	-25.87	-26.12	-26.65	-24.78
Max	-22.30	-22.52	-22.85	-23.63	-23.68	-23.43	-23.63	-24.11	-23.84
Min	-26.50	-26.69	-27.47	-27.94	-28.25	-27.61	-28.33	-28.50	-27.23

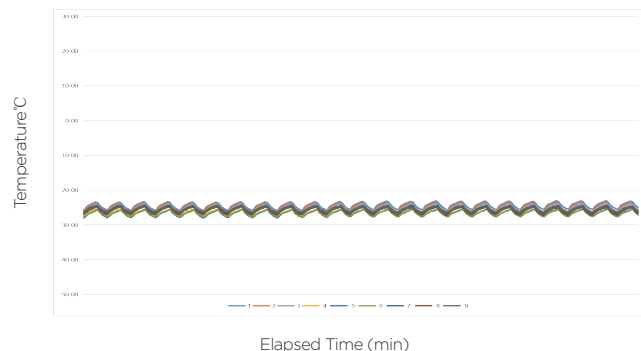
Midea Biomedical, Trademarks are the property of their respective owners. Drawings are not for engineering use, and specifications may change. Not all products are available in all countries, so please check with your local sales representative for details.

Dimensions and Construction

Interior (w*d*h)	540*450*1277 mm
Exterior (w*d*h)	700*690*1920 mm
Access Port	Two test ports, one fitted with a pressure relief valve, cannot be used as test ports. (25 mm diameter)
Shelves	7 18 kg max capacity
Wheels	4 Swivel Casters + 2 Leveling Feet
Net Weight	102 kg 100 kg 102 kg
Gross Weight	114 kg 112 kg 114 kg

All performance data from 308L biomedical freezer, 25 ambient, -25°C

Uniformity



Cooling Speed

