



MC-5L42



Compact Design

Space-optimized for confined environments: Ideal for small labs/policy institutes, fits seamlessly under workbenches



Eco-Efficient Cooling

R600a (HC)refrigerant:Near-zero GWP
Energy consumption: ≤0.65kWh/24h



Precision Temp. Control

Uniformity of $\pm 1^{\circ}\text{C}$: Ensures sample integrity throughout the chamber

Display panel



USB Port

Built-in handle

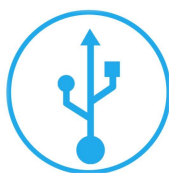


LOW-E glass door

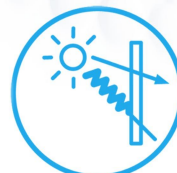


Multiple Alarm

Multi-tier alerts (audible/visual/remote) with power/sensor/door/high/low temp./battery monitoring



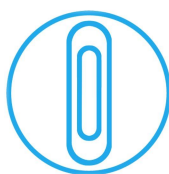
Std: USB | Opt: RS485



Low E Glass



Opt:Reversible Door



Built-in Handle



Forced-Air Cooling
No Frost

Application, Rating, & Electrical Data

Application	Pharmacy refrigerator
Storage Volume (L/Cu.ft)	42/1.48
Temperature Range	2°C ~ 8°C
Default Set Point	5°C
Power	115V/60Hz 220-240 ~ V/50Hz 220-240 ~ V//60Hz
Current	1.5A 0.75A 0.75A
Power Cord Length	1.7m
Certification	CE/UL/ ENERGY STAR/ NSF/ANSI 456
Door type	Low-E Glass Door
Application Environment	Non-corrosive, non-flammable, non-explosive
Ambient Operating Temperature	16°C ~ 32°C

Refrigeration

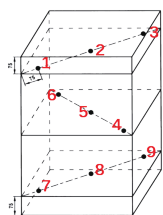
Refrigeration System	Forced-air/hydrocarbon Refrigerant
Compressor	Hermetic
Condenser Type	Built-in
Expansion Device	Capillary tube
Evaporator Type	Plate Evaporator
Defrost Method	Automatic
Refrigerant	R600a

Controller / Configuration Settings

Display screen	LED
Controller Type	Microprocessor
Security	Lockable door, password protected settings
Control Sensor	NTC, stainless steel
Communication Ports	USB, Remote alarm contacts
Power Failure Alarm	Yes
High/Low Alarms	Yes, fully adjustable
Door Ajar Alarm	Yes, fully adjustable
Min/Max Temperature	Yes, display and reset
Download	Yes, via USB. PDF
Temperature Log	Yes, download via USB
Temperature Monitoring Ballast	Yes
Battery Back-up	Yes, 16 hr display and alarm back-up Rechargeable 12V, lead acid

Dimensions

Interior (w*d*h)	380*300*410 mm
Exterior (w*d*h)	450*459*569.5 mm
Access Port	N
Shelf/Drawer	Shelf*1 +Drawer*1 12 kg max capacity/shelf
Leveling Feet	Y
Net Weight	23 kg
Gross Weight	25 kg



Location of test probes

Typical Temperature Map

	test1	test2	test3	test4	test5	test6	test7	test8	test9
Avg	4.88	5.24	5.15	4.13	4.32	4.92	4.71	4.78	5.37
Max	5.30	5.60	5.50	4.80	4.70	5.20	5.00	5.10	5.70
Min	4.40	4.90	4.70	3.50	4.00	4.60	4.40	4.40	5.10

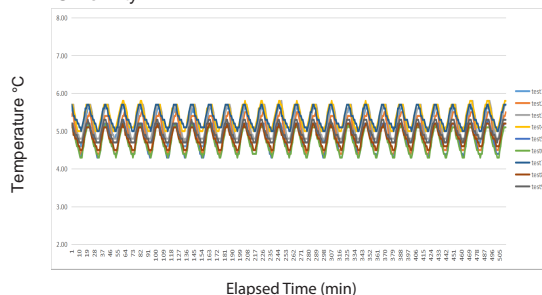
Midea Biomedical,Trademarks are the property of their respective owners.,Drawings are not for engineering use, and specifications may change. Not all products are available in all countries, so please check with your local sales representative for details.

Performance Characteristics (normal operating conditions)

Uniformity (°C)	±1.0
Recovery to 8°C after 1 min door opening (min)	7.5
Temperature fluctuation (°C)	≤3
Energy consumption (kWh/day	0.65
Noise emission (dB)	45
Heat rejection (BTU/hr)	460
Pull-down time to 6°C (min)	70

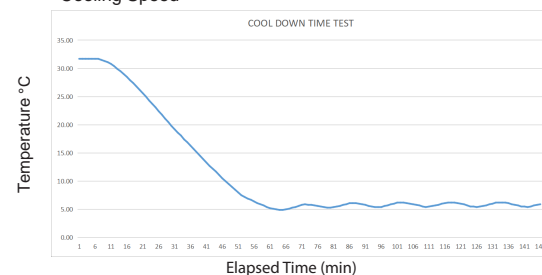
All performance data from 42L refrigerator, 25 ambient, 5.0°C

Uniformity



Elapsed Time (min)

Cooling Speed



Elapsed Time (min)

