



MC-5L756



## Inverter Compressor



## Super & Even Cooling

110Mins Rapid Cooling( 32°C→6°C)&≤2°C Uniformity.

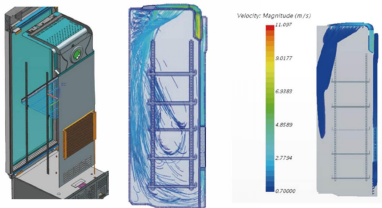
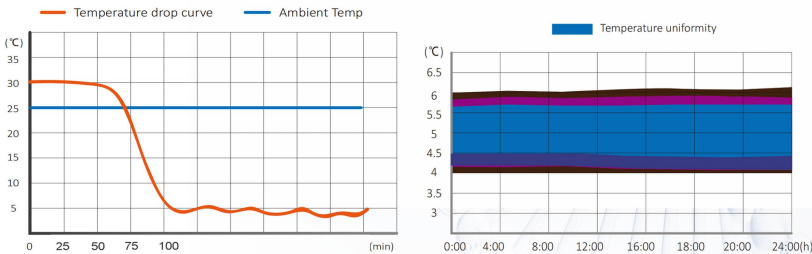


## Eco-Efficient Cooling

R600a (HC)refrigerant:Near-zero GWP  
Energy consumption: ≤3kWh/24h

■ Top Cooling System

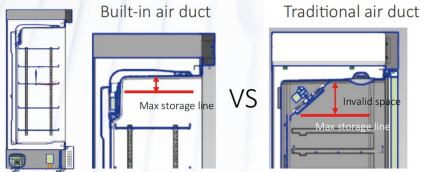
### ■ Typical Performance Characteristics at 25 °C Ambient



### ■ Dual Display

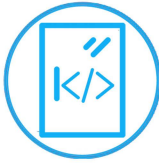


### ■ Built-in Air Duct

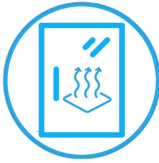


## Multiple Alarm

Multi-tier alerts (audible/visual/remote) with power/sensor/door/high/low temp ./battery monitoring



## Self-closing Door



## Electrically Heated Glass Door

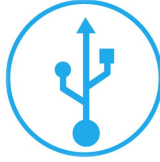


## Forced-Air Cooling

No Frost



## Opt:304 Stainless Steel



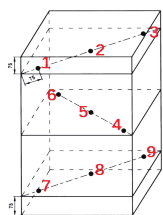
## Std: USB | Opt: RS485

Application, Rating, & Electrical Data	
Application	Pharmacy refrigerator
Storage Volume ( L/Cu.Ft )	756/26.70
Temperature Range	+2°C to +8°C
Default Set Point	+5°C
Power Supply	115 ~ V/60Hz   220-240 ~ V/50Hz/60Hz
Current	3.6A   2A
Power Cord Length	1.7m
Certification	CE/UL
Door type	Electrically Heated Glass Door
Application Environment	Non-corrosive, non-flammable, non-explosive
Ambient Operating Temperature	+16°C to +32°C

Refrigeration	
Refrigeration System	Forced-air/hydrocarbon Refrigerant
Compressor	Inverter
Condenser Type	Air-cooled
Expansion Device	Cap tube
Evaporator Type	Fin and tube
Defrost Method	Automatic
Refrigerant	R600a

Controller / Configuration Settings	
Display screen	LED
Controller Type	Microprocessor
Security	Lockable door, password protected settings
Control Sensor	NTC, stainless steel
Communication Ports	USB, Remote alarm contacts
Power Failure Alarm	Yes
High/Low Alarms	Yes, fully adjustable
Door Ajar Alarm	Yes, fully adjustable
Min/Max Temperature	Yes, display and reset
Download	Yes, via USB. PDF
Temperature Log	Yes, download via USB
Temperature Monitoring Ballast	Yes
Battery Back-up	Yes, 16 hr display and alarm back-up   Rechargeable 12V, lead acid

Dimensions	
Interior (w*d*h)	880*634*1354 mm
Exterior (w*d*h)	970*808*1920 mm
Access Port	Access Port- for external monitoring probe(s) (25 mm diameter)
Shelves	10   35 kg max capacity/shelf
Wheels	4 Swivel Casters & 2 Leveling Feet
Net Weight	140 kg
Gross Weight	161 kg



Location of test probes

Typical Temperature Map

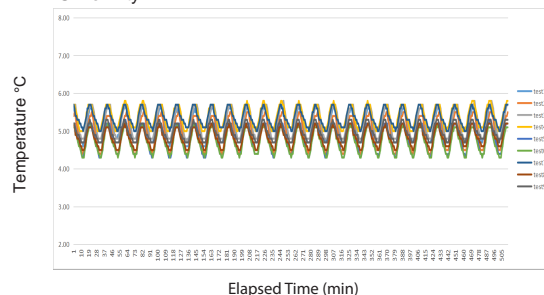
	test1	test2	test3	test4	test5	test6	test7	test8	test9
Avg	4.88	5.24	5.15	4.13	4.32	4.92	4.71	4.78	5.37
Max	5.30	5.60	5.50	4.80	4.70	5.20	5.00	5.10	5.70
Min	4.40	4.90	4.70	3.50	4.00	4.60	4.40	4.40	5.10

Midea Biomedical, Trademarks are the property of their respective owners. Drawings are not for engineering use, and specifications may change. Not all products are available in all countries, so please check with your local sales representative for details.

Performance Characteristics (normal operating conditions)	
Uniformity   ( °C )	2
Recovery to 8°C after 1 min door opening   ( min )	13.5
Temperature fluctuation   ( °C )	< 2
Energy consumption   ( kWh/day )	3
Noise emission   ( dB )	58
Heat rejection   ( BTU/hr )	640
Pull-down time to 6°C   ( min )	110

All performance data from 756L refrigerator, 25 ambient, 5.0°C

Uniformity



Cooling Speed

