

# Ice-Lined Chest Refrigerator



MBC-180



## Hold Over Time

Maintains 2–8°C for 73hrs at 43°C ; 120hrs at 32°C during outage.



## Eco-Cool Refrigerant

R600a (natural hydrocarbon, low-GWP) refrigerant ensures zero ozone depletion and lower climate impact .



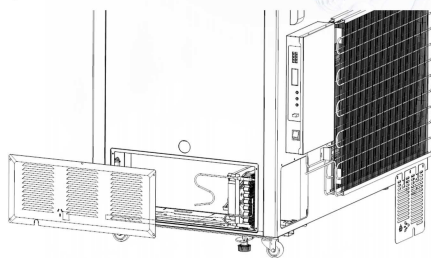
## All-Weather® Resilience

System delivers 5°C–43°C ambient operation paired with +20% -22% voltage tolerance (171–264V/50/60Hz).

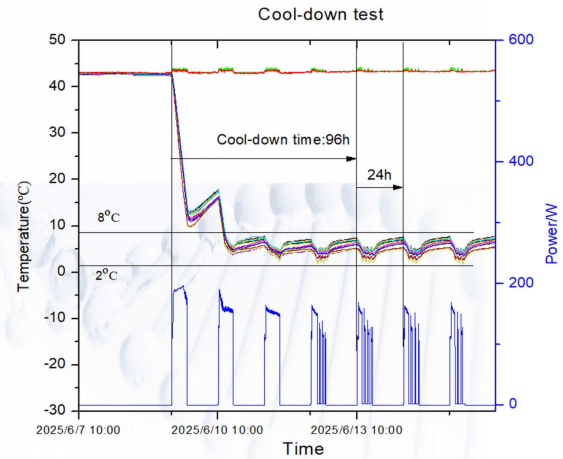
### Solar LED Temperature Display



### Dual-layer Cooling Structure

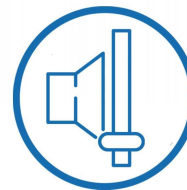


### Cool Down Test



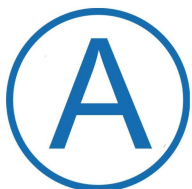
## Safety Lock

Lockable door with key



## Low Noise

35 dB(A)



## Meets the A level PQS

Meets the A level PQS requirements for anti-freezing protection



## 30 Days Temp. Logger

### Application, Rating, & Electrical Data

Application	Ice-Lined Chest Refrigerator
Gross Volume (L/Cu.Ft)	180/6.36
Vaccine Storage Volume (L/Cu.Ft)	154/5.44
Temperature Range	2°C - 8°C
Default Set Point	5°C
Power Supply	220-240-V /50Hz/60Hz
Current	1.5A
Power	200W
Certification	CE
Door type	Solid door
Application Environment	Non-corrosive, non-flammable, non-explosive
Ambient Operating Temperature	5°C-43°C

### Refrigeration

Cooling Type	Direct cooling
Compressor	Hermetic, variable speed
Condenser Type	Air cooling
Expansion Device	Capillary tube
Evaporator Type	Built-in
Defrost Method	Auto
Refrigerant	R600a

### Controller / Configuration Settings

Display screen	Solar LED Temperature Display
Controller Type	Microprocessor
Security	Lockable door with key
Control Sensor	NTC
Communication Ports	No
Power Failure Alarm	No
High/Low Alarms	Yes
Door Ajar Alarm	Yes
Download	Yes, via USB ,PDF
Temperature Log	Yes,Download via USB
Sensor Error	Yes
LED Light	No
Compressor Operation Indicator Light	Yes

### Performance Characteristics (normal operating conditions)

EC Cool Down Test   (kWh/day)	1.12
EC Stable Running   (kWh/day)	0.6
Holdover Time at 43°C(h)	73
Holdover Time at 32°C(h)	120
Freezer Protection Level	A

### Dimensions and Construction

Interior (w*d*h)	370*635*840 mm
Exterior (w*d*h)	1115*740*910 mm
Packing Dimensions (w*d*h)	1200*760*1030 mm
Container Load (20'/40'/40'H)	24/50/50
Net Weight	123 kg
Gross Weight	151 kg

### Accessories

Wheels	4 Swivel Casters + 2 Leveling Feet
Baskets shelves	5 /
30 Days Temperature Logger	Yes
Automatic Voltage Stabilizer	Optional

